

Throckmorton Renovation / OFFICIAL

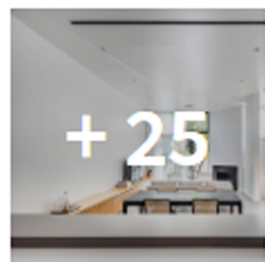
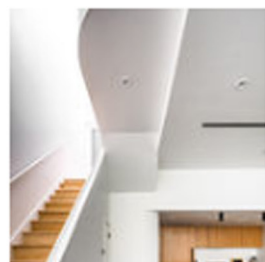
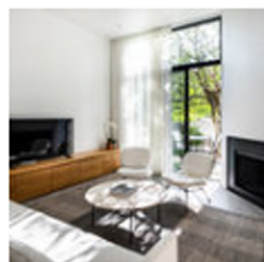
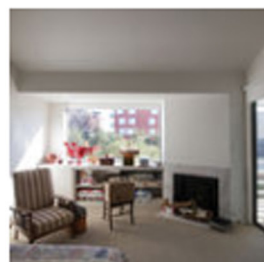
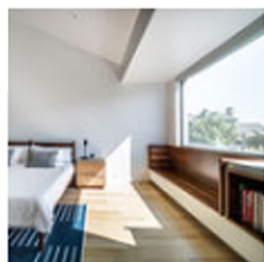
17:00 - 26 October, 2018

 [Save this project](#)

 Like 6

 Tweet

 Pin it



Architects : OFFICIAL
Location : Dallas, United States
Project Year : 2018
Photographs : Robert Yu Photography
Manufacturers : Caesarstone, Lucifer Lighting, Ann Sacks, Norman Copenhagen



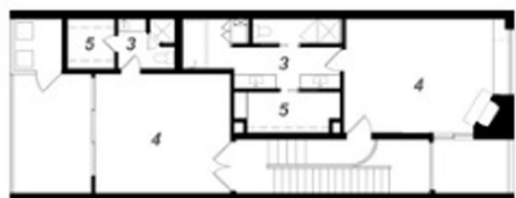
Text description provided by the architects. Our aesthetically astute clients bought a 1980's Bud Oglesby designed townhouse with the intention of renovating it for themselves and their growing art collection while staying true to the original design. The project had a sophisticated section so our goal was to modernize the spaces in both use and technology while also rectifying awkward and outdated spatial relationships.



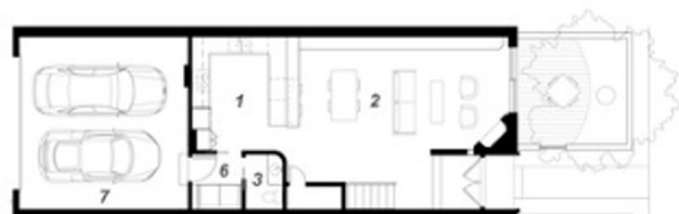
In the original layout the utilitarian spaces were on full view from the front door. Our intent was to create a more formal entry sequence and conceal the laundry, garage, and utility rooms. To do so, we opened up the enclosed kitchen and reorganized the support spaces behind a complementary curved wall that ties back into Oglesby's original sculptural stair and landing.



EXISTING LEVEL ONE



EXISTING LEVEL TWO



NEW LEVEL ONE

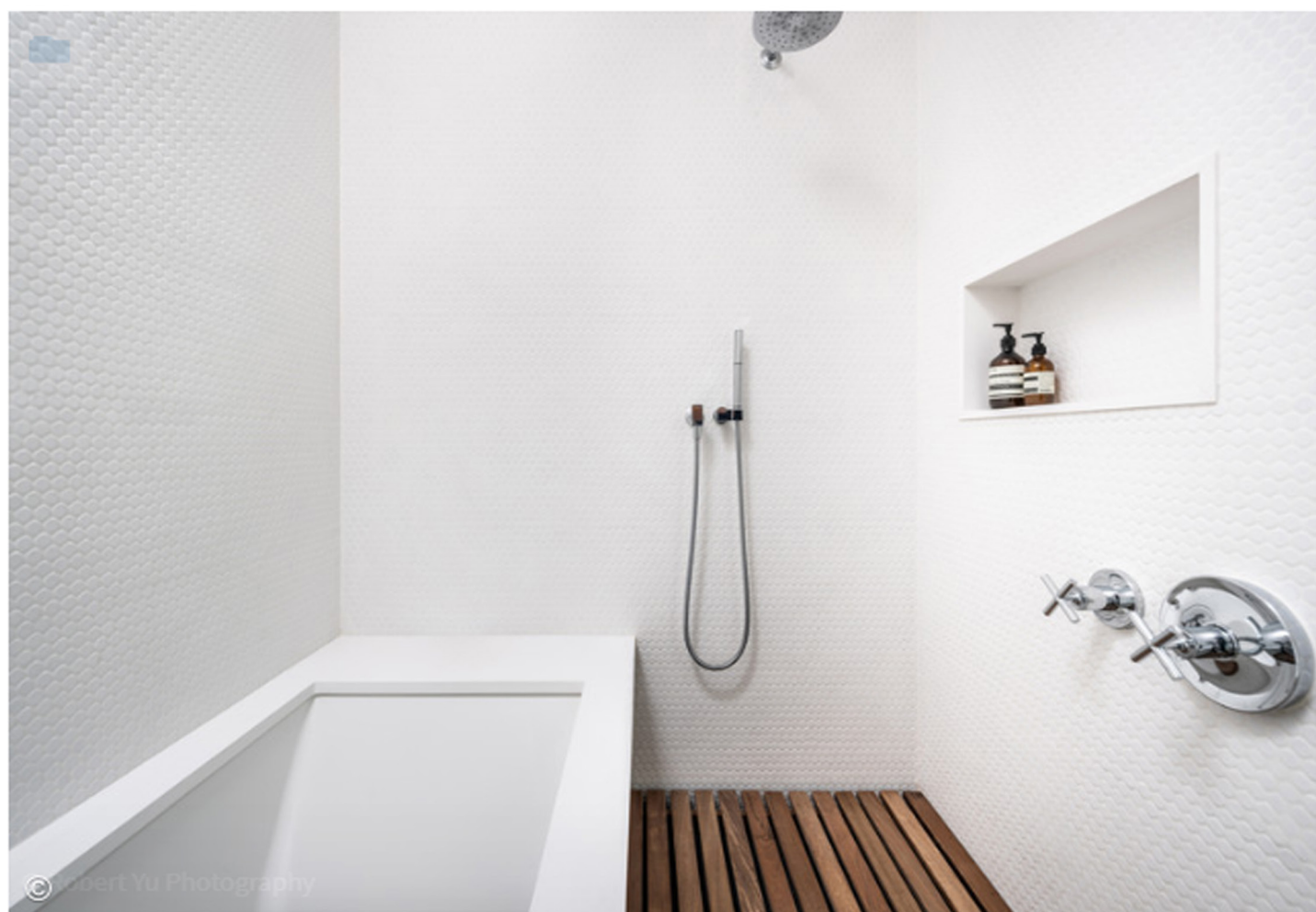


NEW LEVEL TWO



- 1 / KITCHEN
- 2 / LIVING ROOM
- 3 / BATHROOM
- 4 / BEDROOM
- 5 / CLOSET
- 6 / LAUNDRY
- 7 / GARAGE

The original master bathroom layout was undeserving of its dramatic, skylit ceiling. We reconfigured the components of the bath to be more in harmony with the natural lighting conditions and vaults. We moved the shower from a dark corner and merged it with the tub room, in doing so created a spa-like experience for everyday use.



Smoothing the existing walls amplified the natural light cascading through the house and further celebrated the formal geometry of the original design. Warmth was incorporated by way of American walnut and white oak cabinetry contrasting the white and grey surfaces. Fireplace surrounds were refined to minimalist powder-coated steel enclosures. The built-in console in the living room and window seat in the master adds order and organization. The overall resulting space is likened to a small art gallery.



View the complete gallery

