

# Throckmorton Renovation

Oak Lawn, Dallas, Texas



View Photos

Our aesthetically astute clients bought a 1980's Bud Oglesby designed townhouse with the intention of renovating it for themselves and their growing art collection while staying true to the original design. The project had a sophisticated section so our goal was to modernize the spaces in both use and technology while also rectifying awkward and outdated spatial relationships.

In the original layout the utilitarian spaces were on full view from the front door. Our intent was to create a more formal entry sequence and conceal the laundry, garage, and utility rooms. To do so, we opened up the enclosed kitchen and reorganized the support spaces behind a complementary curved wall that ties back into Oglesby's original sculptural stair and landing.

The original master bathroom layout was undeserving of its dramatic, skylit ceiling. We reconfigured the components of the bath to be more in harmony with the natural lighting conditions and vaults. We moved the shower from a dark corner and merged it with the tub room, in doing so created a spa-like experience for everyday use.

Smoothing the existing walls amplified the natural light cascading through the house and further celebrated the formal geometry of the original design. Warmth was incorporated by way of American walnut and white oak cabinetry contrasting the white and grey surfaces. Fireplace surrounds were refined to minimalist powder-coated steel enclosures. The built-in console in the living room and window seat in the master adds order and organization. The overall resulting space is likened to a small art gallery.

*OFFICIAL Design uploaded Throckmorton Renovation through [Add A Home](#). Add your own project for the chance to be featured in [Editor's Picks](#).*

VIEWS

1,503

COMMENTS

1

SHARE



3



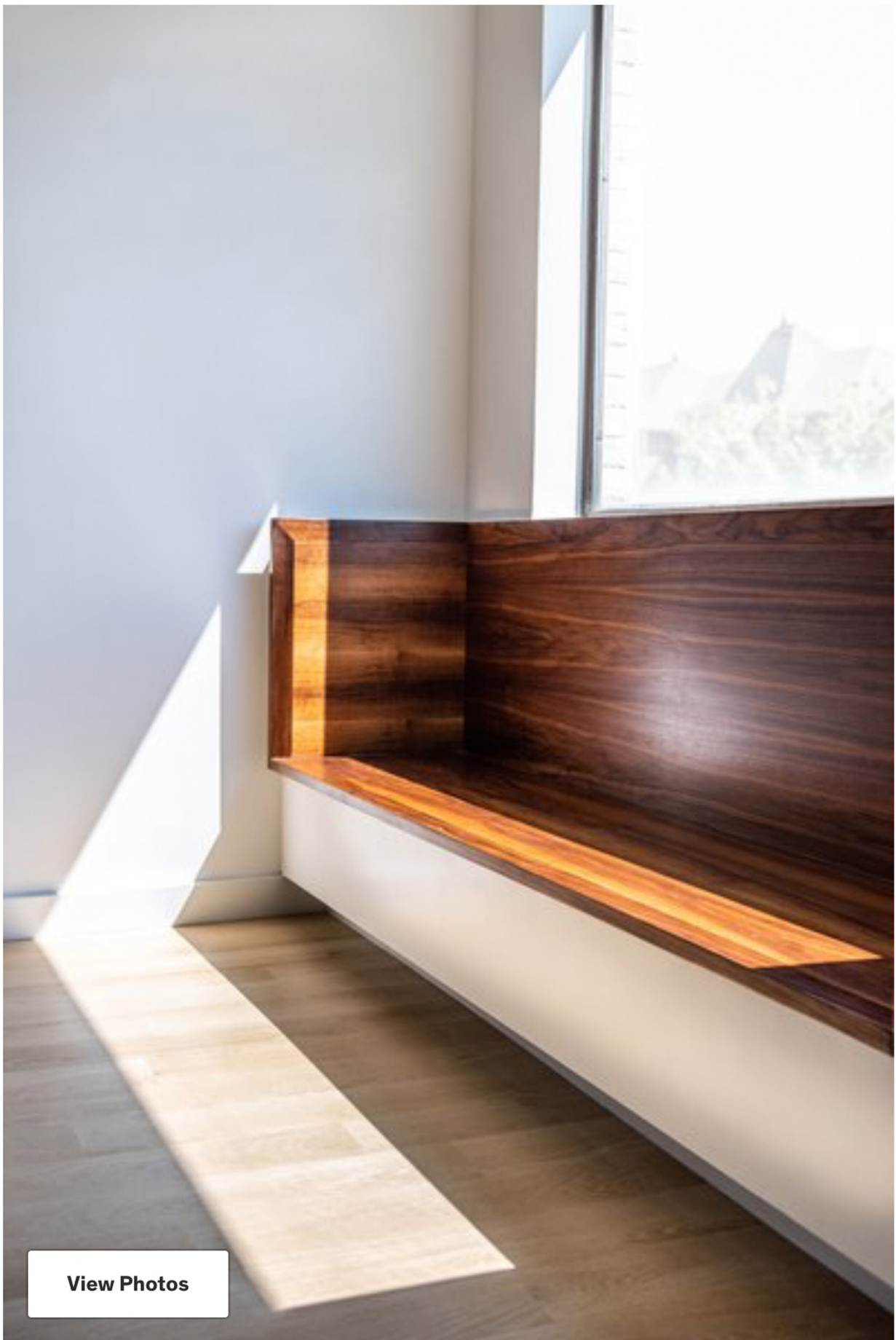


Photo Courtesy of OFFICIAL Design

*Photo Categories: bedroom, light hardwood floors, bench*

Detail at Window Seat in Master Bedroom



Photo Courtesy of OFFICIAL Design

*Photo Categories: staircase*

## Stair and Entry





[View Photos](#)

Photo Courtesy of OFFICIAL Design





[View Photos](#)

Photo Courtesy of OFFICIAL Design

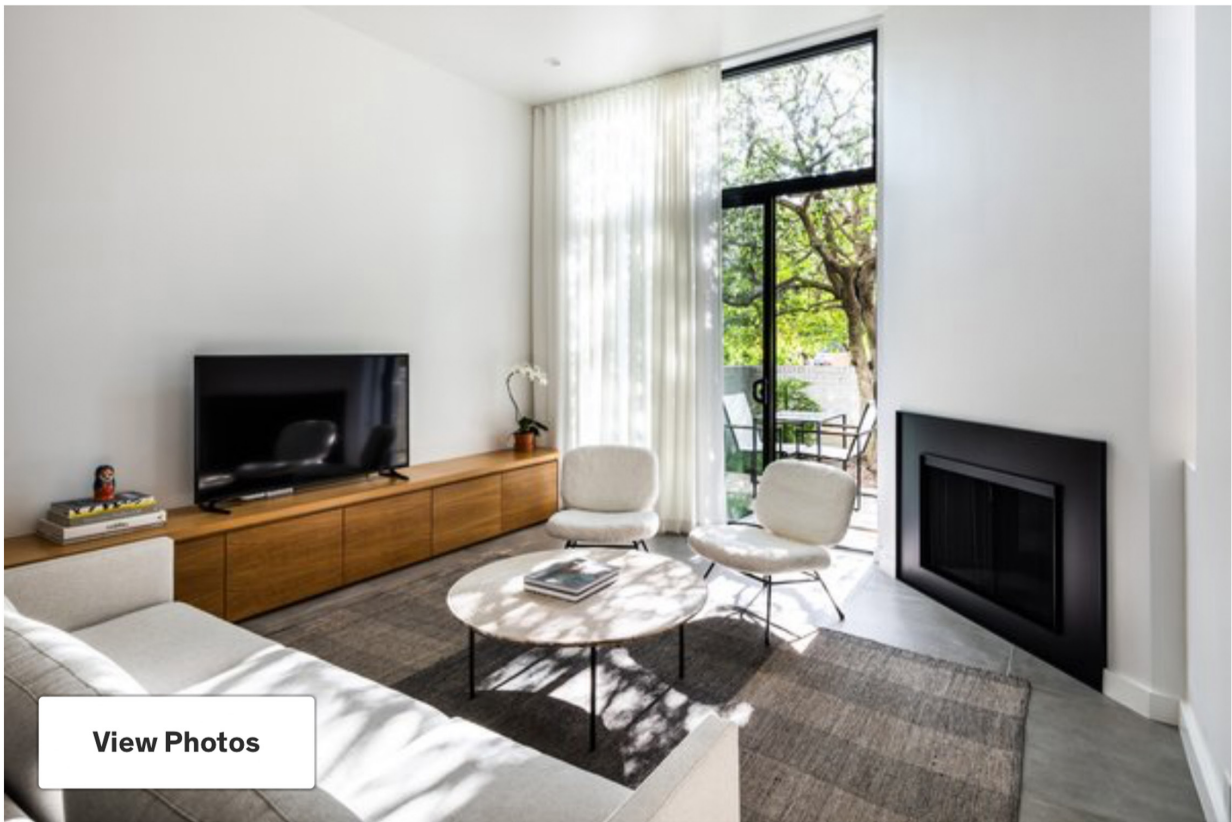


Photo Courtesy of OFFICIAL Design

*Photo Categories: living room, recessed lighting, console tables, ceramic tile floors, gas burning fireplace*

## Living Room

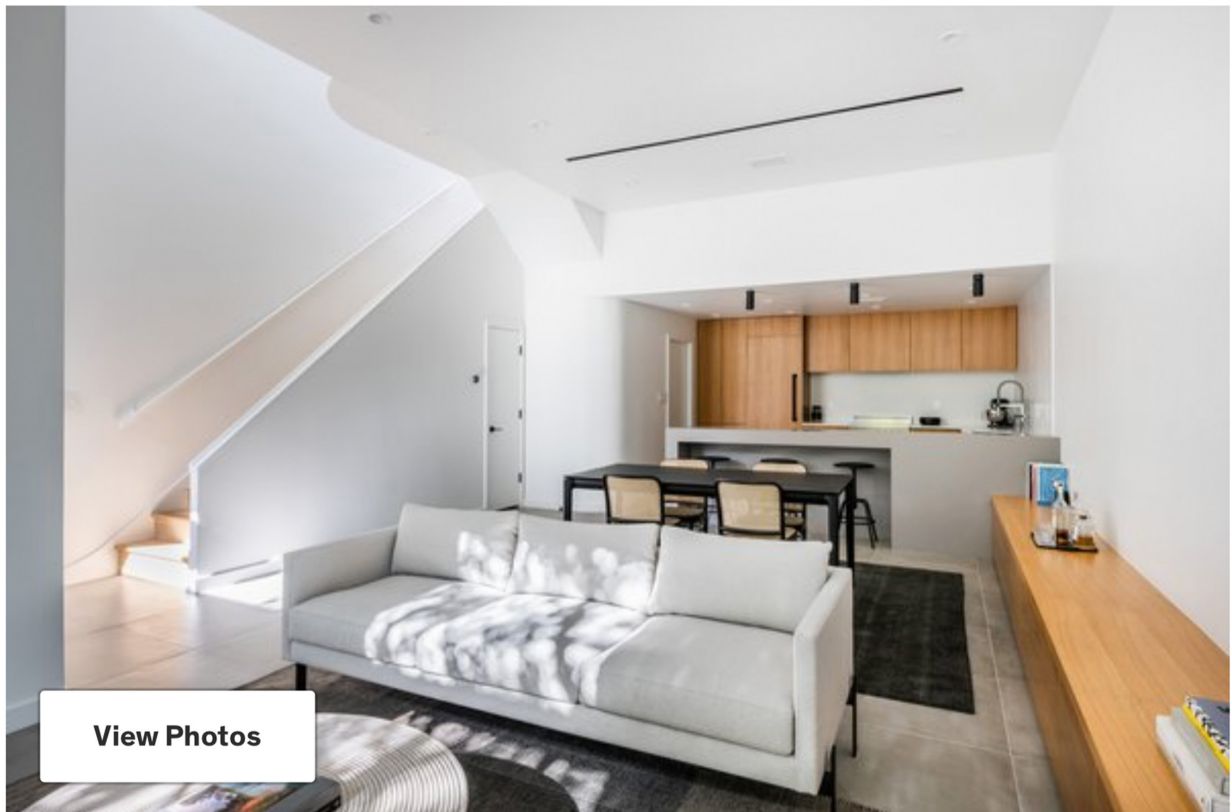
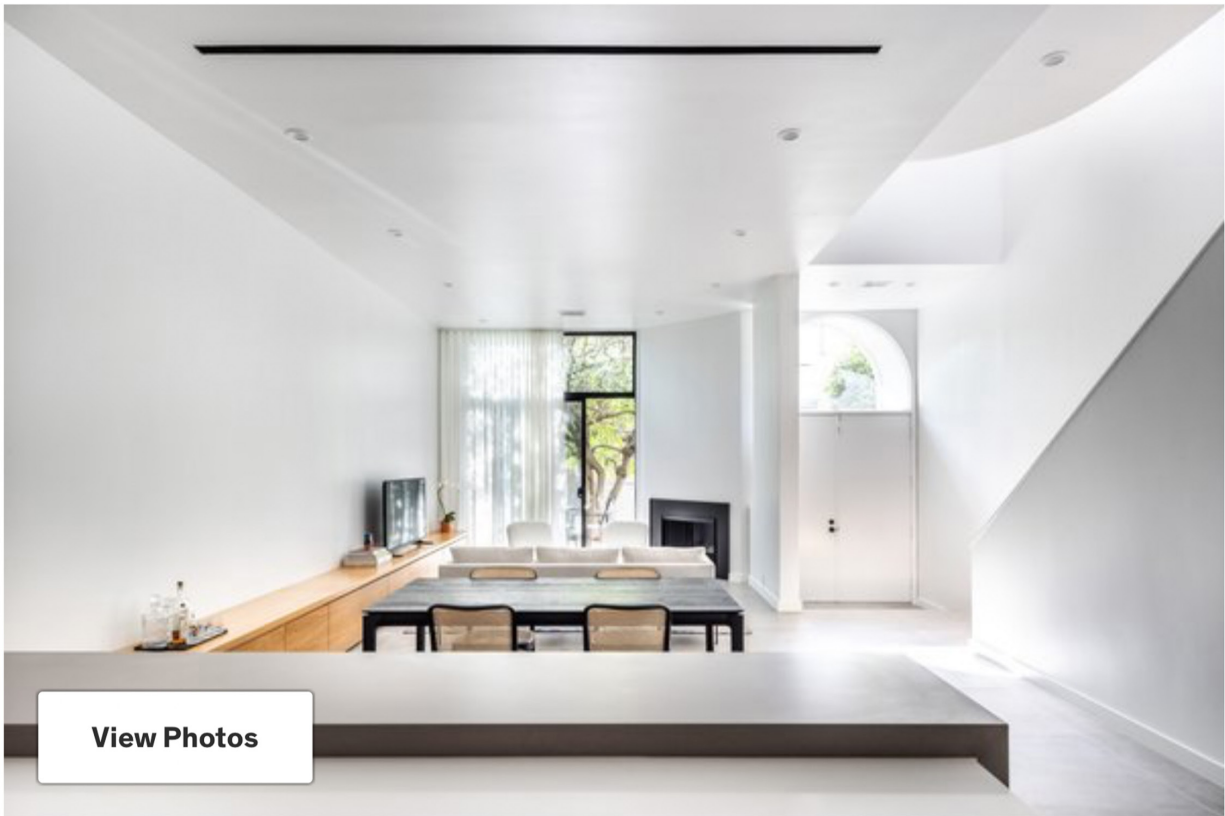


Photo Courtesy of OFFICIAL Design

*Photo Categories: living room, console tables, sofa, porcelain tile floors, recessed lighting*



[View Photos](#)

Photo Courtesy of OFFICIAL Design

*Photo Categories: living room, porcelain tile floors, ceiling lighting, recessed lighting, gas burning fireplace, standard layout fireplace*

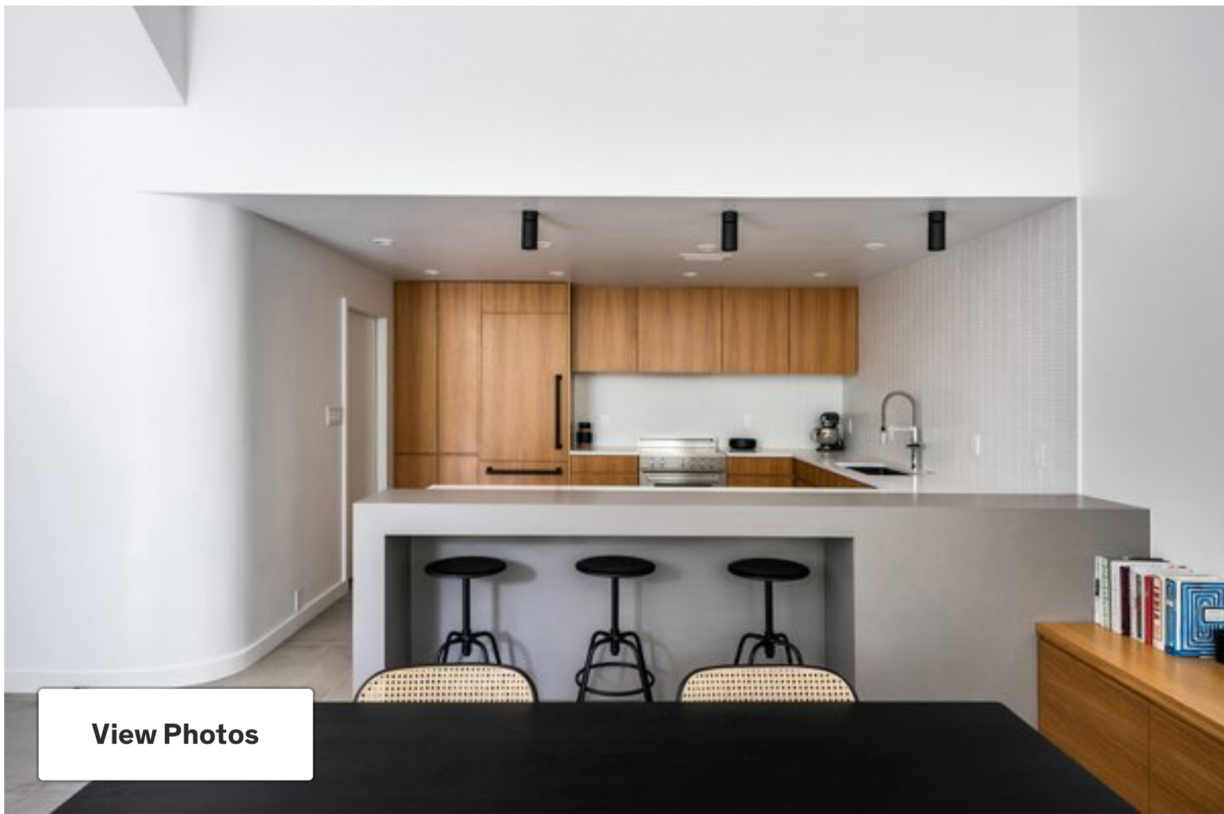
## Living Room - After



[View Photos](#)

Photo Courtesy of OFFICIAL Design



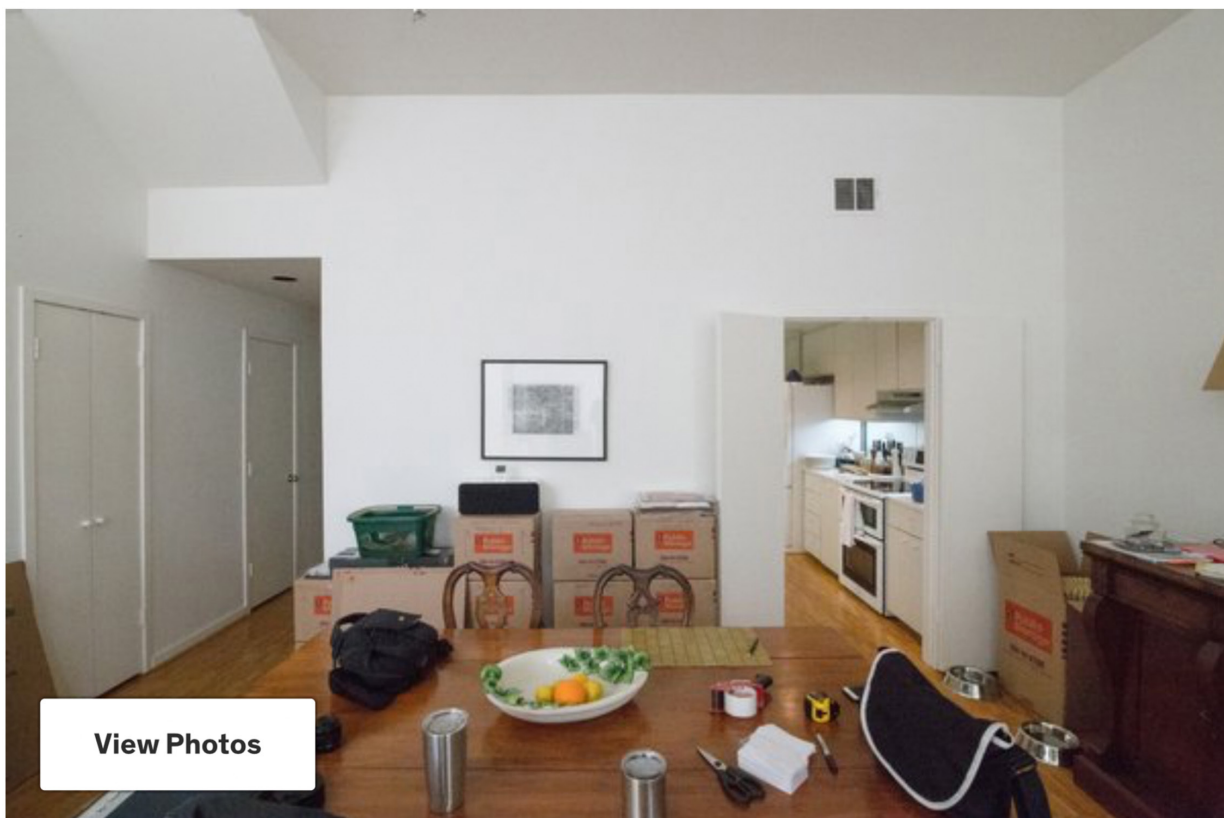


[View Photos](#)

Photo Courtesy of OFFICIAL Design

*Photo Categories: kitchen, range, undermount sinks, wood cabinets, ceiling lighting, porcelain tile floors, ceramic tile backsplashes, engineered quartz counters, recessed lighting, refrigerator*

## Kitchen and Dining - After



[View Photos](#)

Photo Courtesy of OFFICIAL Design



[View Photos](#)

Photo Courtesy of OFFICIAL Design

*Photo Categories: living room*

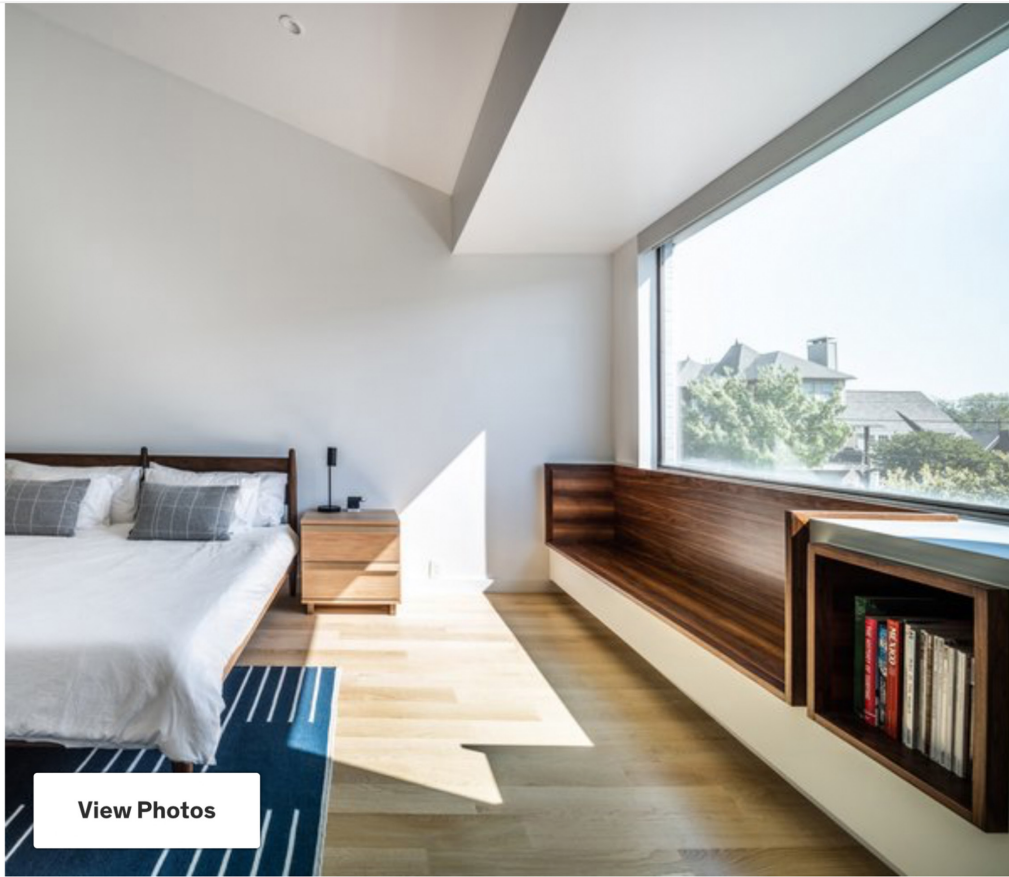


Photo Courtesy of OFFICIAL Design

*Photo Categories: bath room, porcelain tile floors, engineered quartz counters, pendant lighting, vessel sinks*

## Guest Bathroom



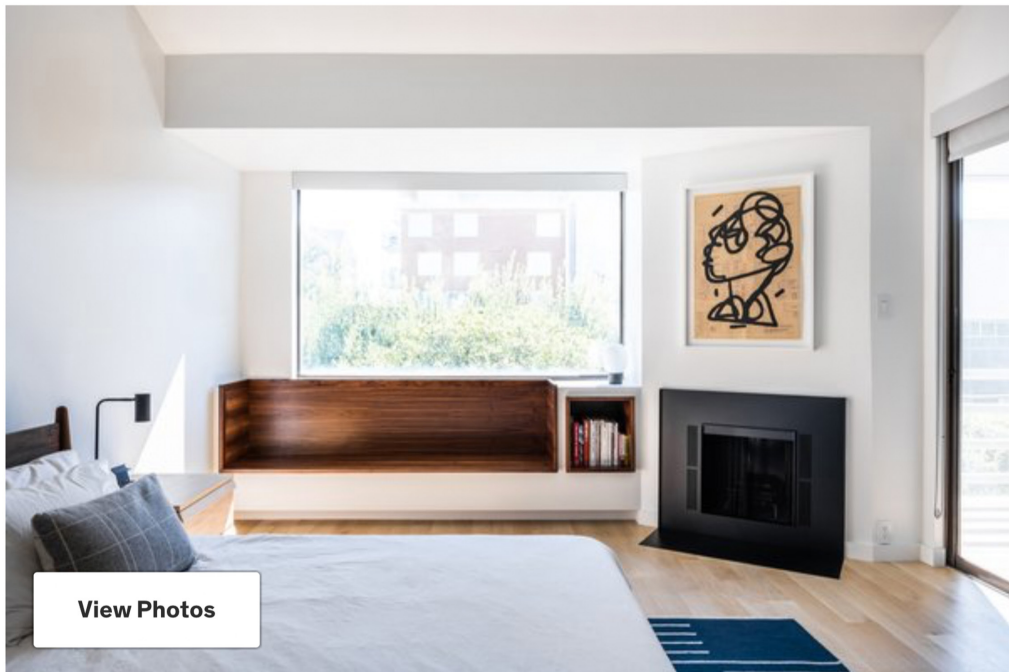


[View Photos](#)

Photo Courtesy of OFFICIAL Design

Photo Categories: bedroom, bed, recessed lighting, bench, light hardwood floors, ceiling lighting

## Master Bedroom



[View Photos](#)

Photo Courtesy of OFFICIAL Design

Photo Categories: bedroom, bed, ceiling lighting, bench, recessed lighting, light hardwood floors

## Master Bedroom - After

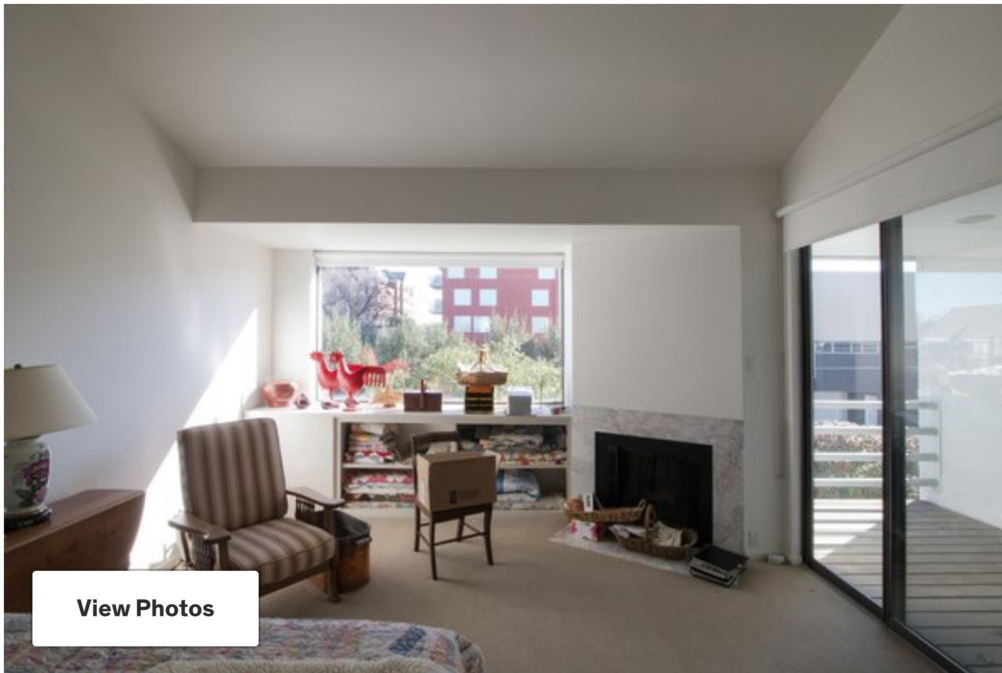


Photo Courtesy of OFFICIAL Design

## Master Bedroom - Before

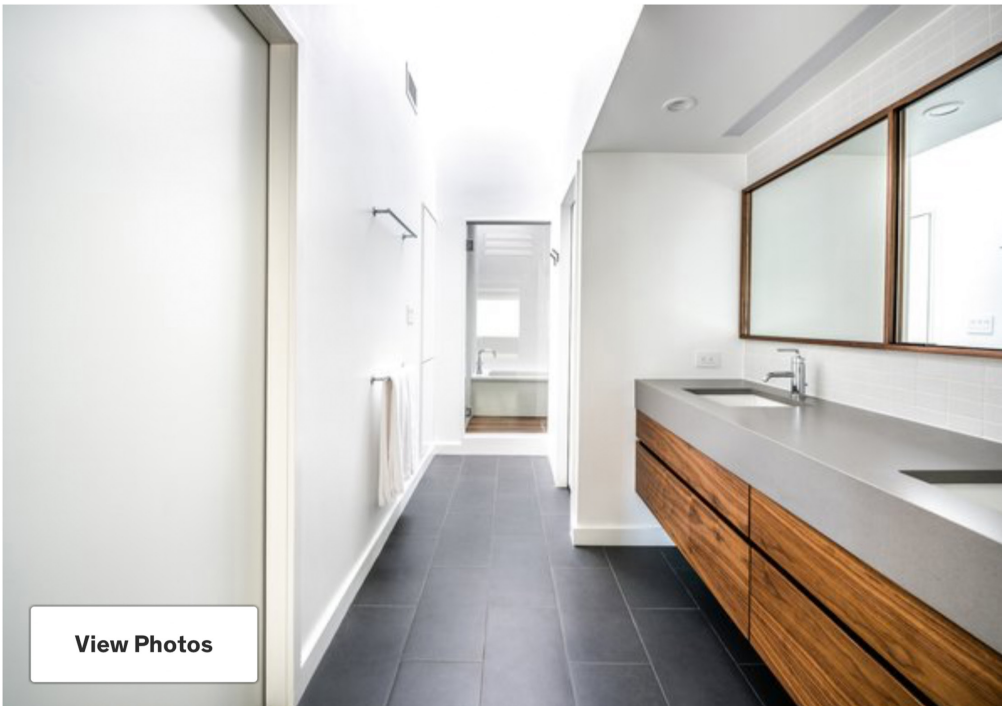


Photo Courtesy of OFFICIAL Design

*Photo Categories: bath room, recessed lighting, ceramic tile floors, undermount tubs, ceiling lighting, undermount sinks, enclosed showers, ceramic tile walls, engineered quartz counters*

## Master Bathroom - After



[View Photos](#)

Photo Courtesy of OFFICIAL Design



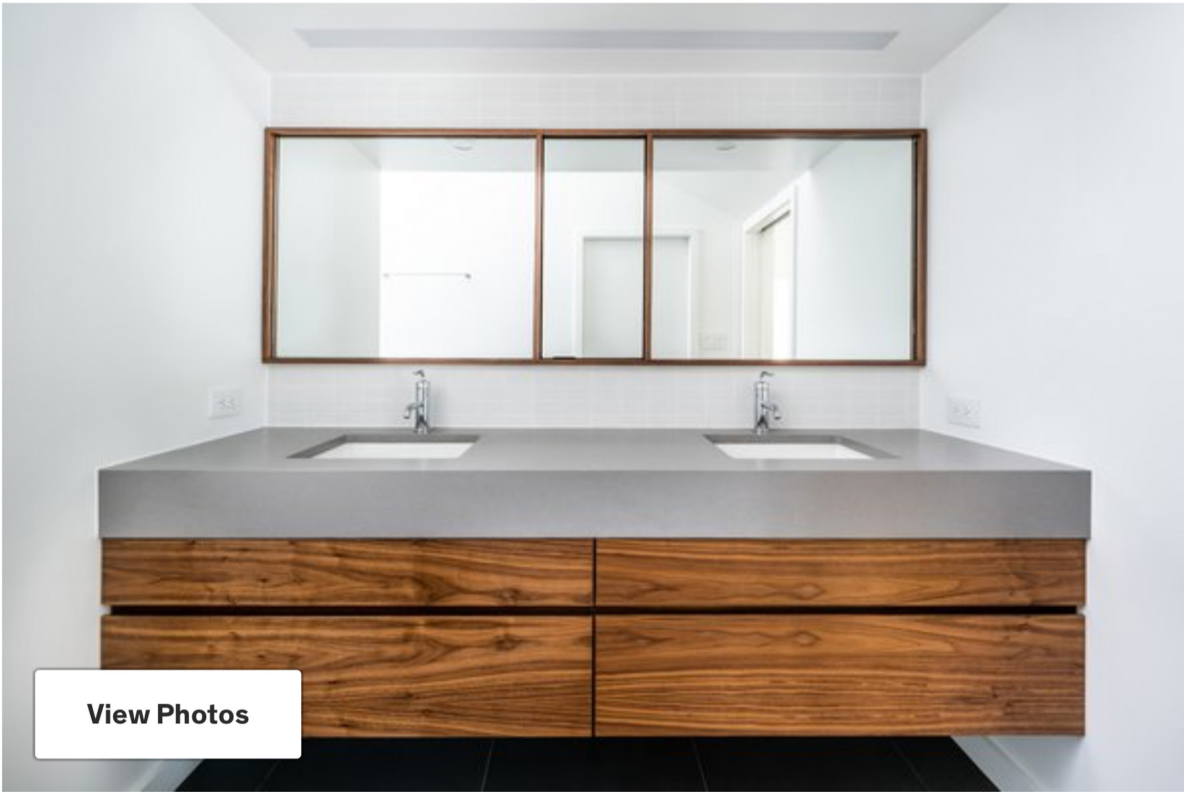


Photo Courtesy of OFFICIAL Design

## Master Bathroom

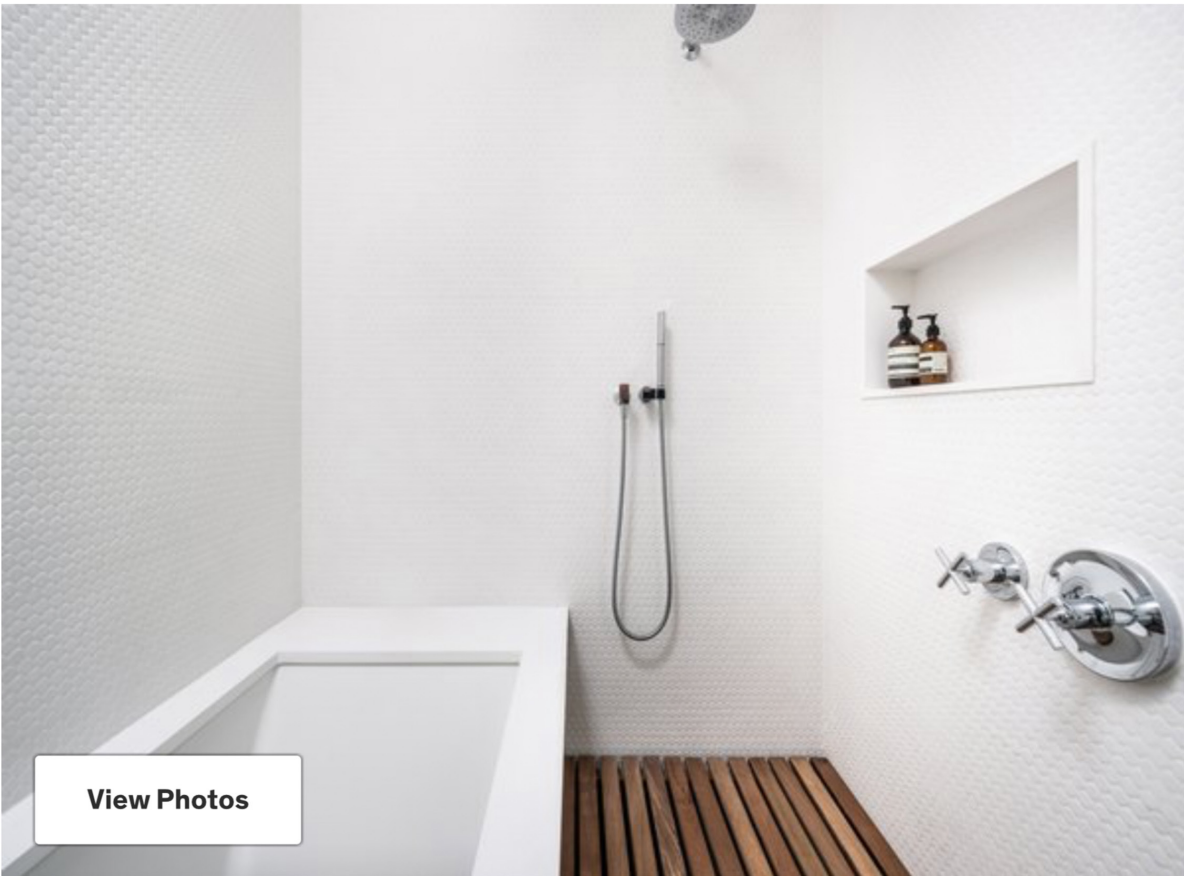


Photo Courtesy of OFFICIAL Design

## Master Bathroom



[View Photos](#)

Photo Courtesy of OFFICIAL Design

# Master Bathroom



[View Photos](#)

Photo Courtesy of OFFICIAL Design

### Detail at Kitchen Cabinets





[View Photos](#)

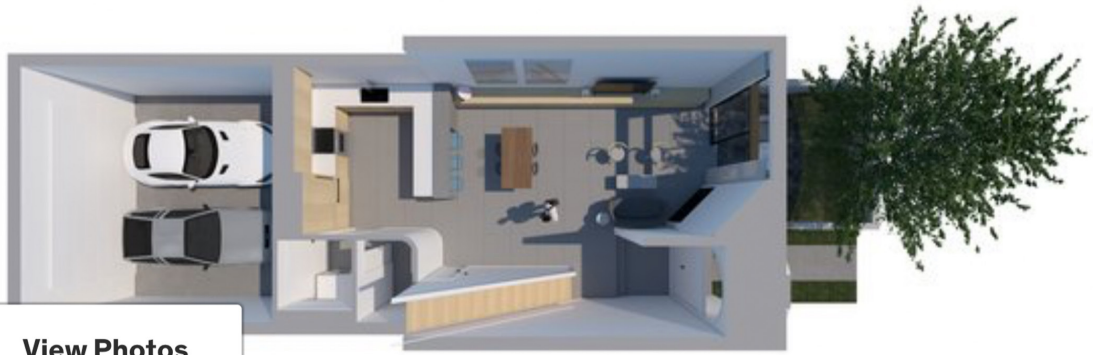
Photo Courtesy of OFFICIAL Design

### Detail at Master Bedroom Bench and Fireplace



Photo Courtesy of OFFICIAL Design

Master Bath - Shower room



[View Photos](#)

Photo Courtesy of OFFICIAL Design



[View Photos](#)

Photo Courtesy of OFFICIAL Design

## Master Bedroom Rendering



[View Photos](#)

Photo Courtesy of OFFICIAL Design

## Kitchen and Dining Rendering





Photo Courtesy of OFFICIAL Design

## Section at Master Bathroom

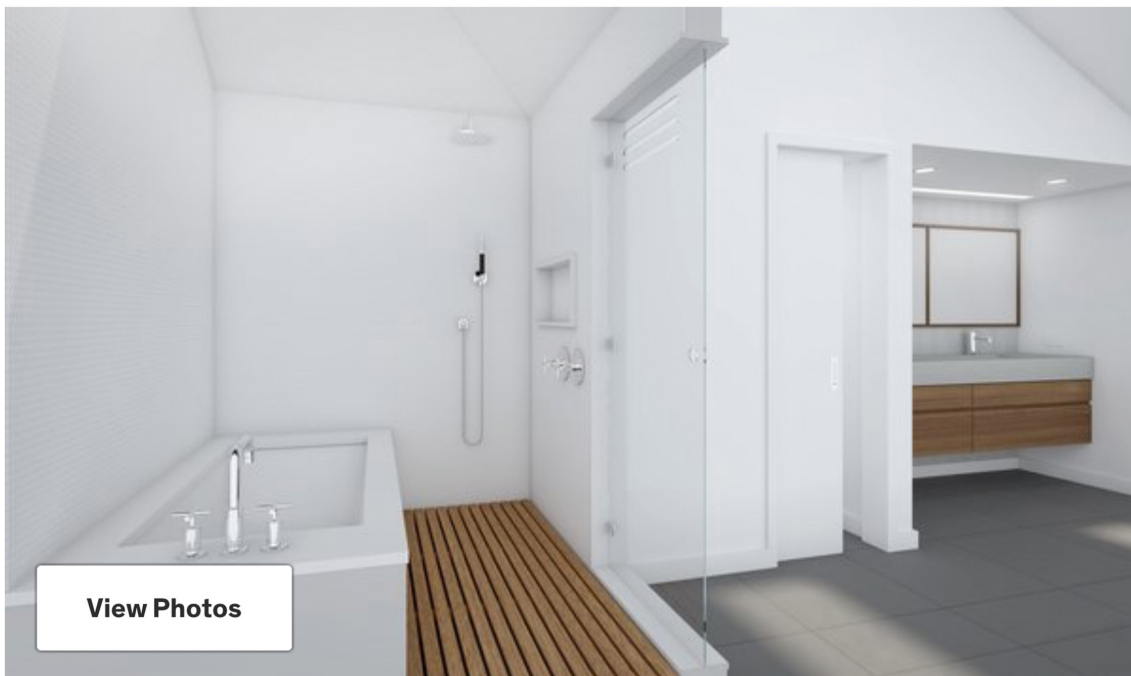


Photo Courtesy of OFFICIAL Design

## Master Bathroom Rendering