

BOB MAGAZINE

#interior #design

INTERNATIONAL
MAGAZINE OF
SPACE DESIGN

B O B

#art #set



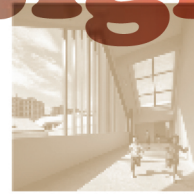
UNOVA CO-WORKING SPACE
The project is a working space located in Shenzhen. The goal is to create a space which can be used for different purposes. It should be a place where people can work, meet, and relax.

100/100page



BLANC DE TEA
Creating a new brand image along with the taste of a tea. Under the concept of big scale furniture design, furniture that has an impressive visual presence in each office and makes environments feel better at the same time.

100/100page



STORY OF A SMALL TOWN
This project consists of 20 classrooms for primary school program and 12 classrooms for kindergarten program, which have a theme: Use natural light and wood material from earth to create a warm and friendly atmosphere.

100/100page

#space

#plan #detail

#sketch

#rendering

#retail #office

#residence



B Project DETSKY MIR HEADQUARTERS UNOVA CO-

WORKING SPACE | IDEAS LAB | BLANC DE TEA

CIVITAS CAPITAL GROUP | STORY OF A SMALL

TOWN | BOB Coordination YONOH STUDIO

BOB Collection

SPACE FOR CHILDREN

This was used in the approach to form, furnishings and decorative elements across the office. The board game proved to be a fruitful analogy for conceiving the office layout. Its constituents of field, grid and playing figures characterise the various typologies of space. The reception zone marks the starting point of the game, with cues that gather the entire idea of the office in one place. Recognisable symbols...

This was used in the approach to form, furnishings and decorative elements across the office. The board game proved to be a fruitful analogy for conceiving the office layout. Its constituents of field, grid and playing figures characterise the various typologies of space. The reception zone marks the starting point of the game, with cues that gather the entire idea of the office in one place. Recognisable symbols...

This was used in the approach to form, furnishings and decorative elements across the office. The board game proved to be a fruitful analogy for conceiving the office layout. Its constituents of field, grid and playing figures characterise the various typologies of space. The reception zone marks the starting point of the game, with cues that gather the entire idea of the office in one place. Recognisable symbols...





OFFICIAL CIVITAS CAPITAL GROUP PROJECT 5

Design : OFFICIAL **Design team :** Mark Leveno, Amy Wynne Leveno **Client :** Civitas Capital Group **Location :** Dallas, Texas, USA **Built area :** 2,050m² **Completion :** October 2017
Photographer : Robert Tsai Photography **Editorial designer :** Choi Sejung **Editor :** Jung Joonyong



Civitas is a youthful investment group and they wanted a well-appointed office that represents their approach as creative thinkers and responsible stewards of client investments. The office is organized by a series of formal and informal paths that both conceal and reveal different work areas from the large conference rooms off the lobby to upholstered booths for individual focus to small meeting rooms for teleconferencing. Circulation paths are defined by floor and ceiling elements while significant thresholds are demarcated by the color red. Auxiliary paths act as shortcuts for daily users while guests take choreographed routes. Upon exiting the elevator guests are engaged by a red portal that leads to a dramatic view of the entirety of the Dallas Arts District. Once inside the lobby an expansive floor to ceiling topographic image references the global reach of Civitas. The lobby filters into formal meeting spaces for Civitas and its clients with a board room that can accommodate the full staff. A sliding red door punctuates the transition to the open office and once beyond it, the space becomes team centric. Collaborative height workstations wrap the perimeter, allowing the majority of the staff to embrace the views and natural light. Private offices define the core while still maintaining visual connectivity to their team and the view beyond. Uniformity and democracy of the work station and office sizes was paramount to Civitas. Workstation clusters are numerically labeled and call rooms are color coded for ease of communication and directions for both staff and visitors. The semi-open office space is complemented by a series of less formal break-out spaces that have been visually distinguished and offer a multitude of working conditions to give the staff variety in terms of lighting, privacy, and interactivity. These spaces include a single person phone room with acoustic walls and a large social café visually and aromatically separated from the office areas. Required by the design brief, a tournament grade ping pong room sits at the far end of the office. The perforated steel cube breaks up the open office by providing a partially obscured space with lounge chairs and upholstered booth seating with custom shelving that supports cell phone video conferencing and charging of devices. An extra large break-out room is concealed on the northernmost end of the space. With work booths, couches, adjustable conference tables, white boards, and video monitors it facilitates all types of work and is often used for team brainstorming sessions. The overall layout of the space takes the good aspects of open office in terms of team unification and collaboration while respecting the needs of an individual by providing many different work environment options. Text offer : OFFICIAL



RENDERING

시비타스는 젊은 투자 전문 기업으로, 모든 설계를 갖추고 창의적인 사고와 의뢰된 투자금을 책임 관리한다는 그들의 경영 철학을 잘 드러내는 사무실을 원했다. 새 사무실은 로비 옆 대형 콘퍼런스 룸, 개별 집중 업무를 위한 직물 마감 부스, 화상용 소규모 회의실을 비롯한 각종 업무 영역을 감추거나 보여주며 여러 주 동선과 보조 동선을 중심으로 구성됐다. 동선은 바닥이나 천장 요소를 활용해 정의됐고, 주요 영역은 빨간색으로 경계가 표시됐다. 보조 동선은 주 사용자를 위한 지름길이 되고, 방문객은 자연스럽게 세심하게 통로를 이용하게 된다. 엘리베이터에서 내린 방문객은 델러스 아트 디스트릭트 전체를 아우르며 멋진 전망으로 안내해주는 붉은색 출입구와 마주하게 된다. 로비에 들어서면 바닥에서 천장까지 이어지는 거대한 지도 이미지가 시비타스의 국제적 활동 범위를 나타내고, 로비는 시비타스와 의뢰인이 만나는 상담실과 전체 직원을 수용할 수 있는 대회의실로 이어진다. 붉은색 미달미은 개방형 업무 공간으로의 이동 과정을 강조하고, 그곳을 지나면 부서 중심으로 공간이 재편된다. 협업에 유리한 높이의 워크스테이션은 공간 경계를 두르며 거의 모든 직원이 조망과 자연광을 누릴 수 있다. 개인 사무실은 코어부를 형성함과 동시에 각 부서와 그 주변 풍경과의 시각적 연계성을

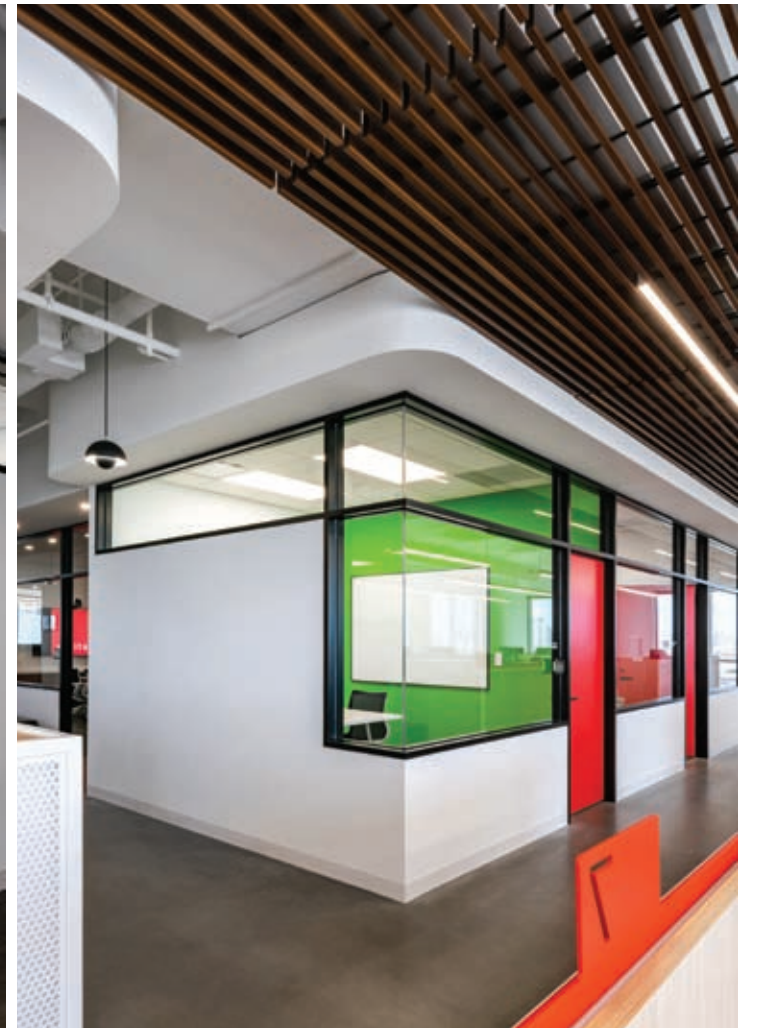
유지한다. 시비타스의 가장 중요한 요소는 워크스테이션의 통일성과 민주성 그리고 사무실 크기다. 워크스테이션은 숫자로 표시되고, 전화실은 색상을 달리해 직원과 방문객의 소통과 이용을 쉽게 했다. 반개방형 업무 공간을 보완한 편안한 분위기의 개별 공간은 시각적으로 구분되어 다채로운 업무 환경을 조성하고 조도, 개방성, 상호성 측면에서 직원들에게 다양한 선택을 준다. 이들 공간 중에는 방음벽을 갖춘 개인용 전화실과 시각적, 분위기적으로 업무 영역과 분리된 커다란 직원 카페도 있다. 업무 공간에서 먼 쪽에는 디자인 요구사항을 반영해 경이용 탁구장이 설치됐다. 다공질 강철 큐브를 통해 라운지 의자가 있는 부분적 은폐된 공간과 휴대전화와 화상회의 및 기기를 충전할 수 있는 주문제작 선반을 갖춘 부스형 좌석으로 개방형 업무 영역이 분리된다. 공간 북쪽 끝에는 또 다른 대형 개별실이 숨겨져 있다. 업무 부스, 소파, 가변형 회의용 탁자, 화이트보드, 영상 모니터 등이 갖춰져 모든 업무를 수용할 수 있고, 부서 아이디어 회의실로 자주 사용된다. 전체 공간 구성은 부서 통합과 협업 측면에서 개방형 사무실의 장점을 살리면서 동시에 다양한 업무 환경을 제공하여 개인의 요구를 채워준다.

글 제공 : 오피셜



RENDERING



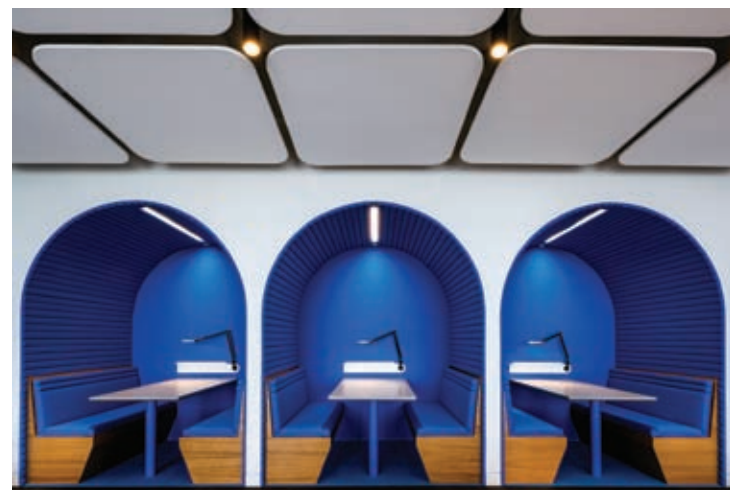


065

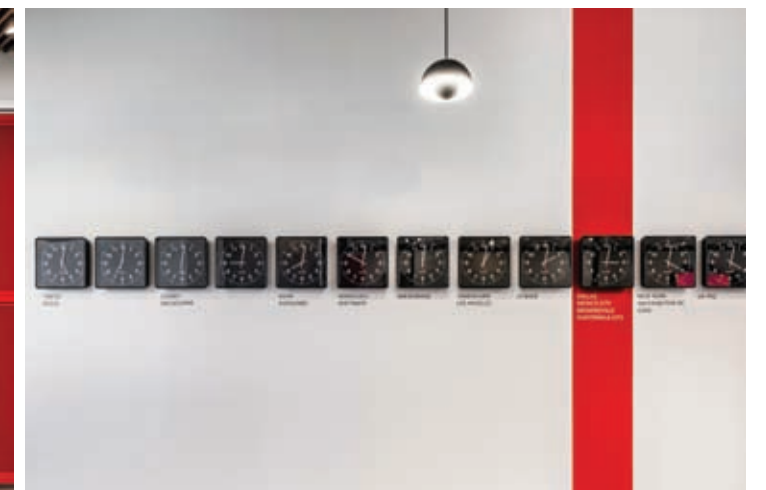
BOB



RENDERING



RENDERING

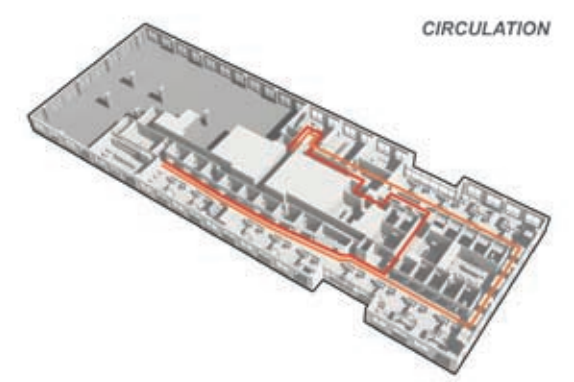




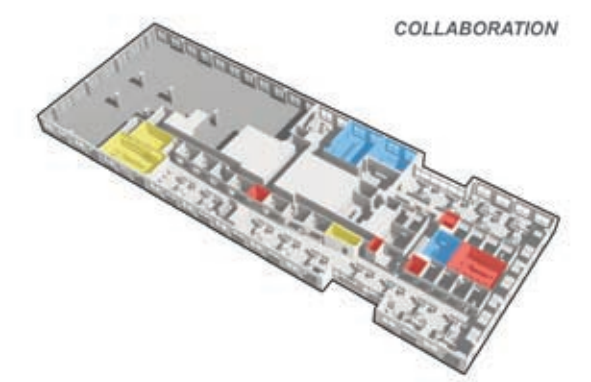
- 1 LOBBY
- 2 CONFERENCE
- 3 MEETING ROOM
- 4 GATHERING
- 5 SUPPORT
- 6 TOILET



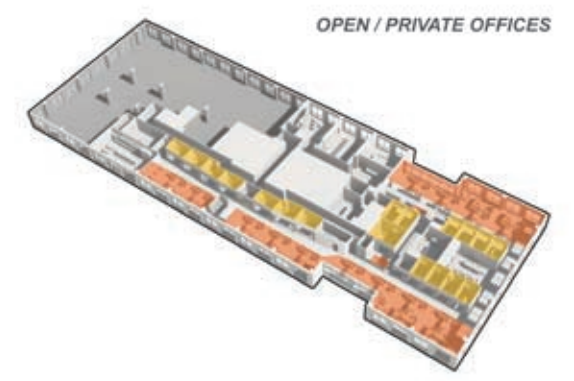
FLOOR PLAN



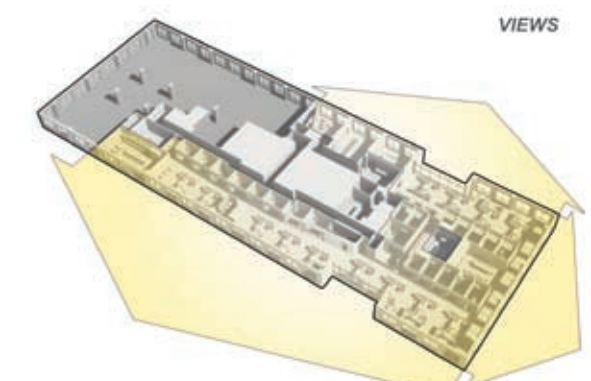
CIRCULATION



COLLABORATION



OPEN / PRIVATE OFFICES



VIEWS

DIAGRAM

